

AccellosOne Warehouse Management System



Version 6.5 Features

Empowering the customer with the **advanced workflow engine**. Customize your WMS without writing code.

More automated and **customizable user experience** through tailoring the user interface for unique roles and leveraging system generated alerts and emails.

Embracing the Cloud – Simple **Cloud-delivered** training videos, label-printing, software updates and content enhancements.

A series of **subject workcenters** facilitates reporting and research into your customers, vendors, product and ERP integrations.

Mobility – Our tablet app allows inspection and reporting on the go.

Extensible UDF Framework - As a component of the AccellosOne “Zero Modification” initiative, this allows the IT organization to seamlessly add new information to the tables.

Functional Enhancements

- Improved delivery and load building
- Enhanced container management
- Extensions to the directed move manager
- New scheduled task management system
- Improved Advance Replenishment functionality

Integration to AccellosOne ASN Manager

Enhanced integration with AccellosOne Bill, AccellosOne Ship, AccellosOne Image, AccellosOne Optimize, AccellosOne Report, AccellosOne Inspection, AccellosOne Pulse, AccellosOne Schedule, AccellosOne Print Manager

AccellosOne Warehouse

Directing your Warehouse Efficiency

Your business is growing, you operate one or many warehouses, and you’re considering what kind of warehouse software is a fit for you. These may be some of your day-to-day considerations:

- Supporting increased sales without increasing staff or space
- Limitations/availability of warehouse space
- Increasing demand/supply fluctuations
- Paper based, bar coding or best-of-breed warehouse software
- Cloud or on premise deployment

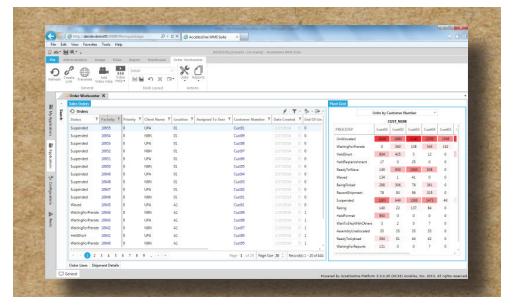
You may also be part of an omni-channel distribution strategy, and considering how to:

- Increase order accuracy and inventory visibility
- Integrate shipping, ASN printing, and EDI as part of the outbound order process
- Minimize inventory carrying costs and conduct cycle counts quickly and accurately
- Decrease warehouse labor costs and potential chargebacks and penalties from retailers
- Utilize one of many available pick methods

Accellos can help. The AccellosOne Warehouse solution was built by supply chain experts to provide the out-of-the-box tools and the extensibility to tackle even the most difficult tasks in the warehouse.

Enterprise Scalability

AccellosOne Warehouse is designed for small to mid-sized businesses, meaning it doesn’t require an army of IT staff to support. You are able to start with the functionality that you need now at a price that makes sense, and scale for growth over time. Our seamlessly integrated modules and applications are available to you when you need them.



Here’s a peek into the Order Workcenter within the WMS

Breadth, Depth And Reach

AccellosOne Warehouse is built on a web-centric platform with standard best-of-breed warehouse management features, as well as dynamic directed putaway, several bar code supported picking styles, container building, cartonization, repackaging, voice and RFID to name a few.

Advanced Workflow Engine

We’ve incorporated Microsoft’s advanced workflow engine in the AccellosOne Platform. Workflow empowers you to customize the functionality of the WMS rather than writing code. Better results and easier upgrades.

AccellosOne Warehouse

TIGHTEN CONTROL

AccellosOne provides you with the tools to maintain better inventory accuracy - minimizing writedowns and writeoffs. To insure compliance with your customers labeling requirements. Improve your control in these and many more key areas of your business

MAXIMIZE EFFICIENCY

Leverage our advanced processes to improve your picking and receiving functions. To eliminate manual order checking. These are just a few areas where AccellosOne helps your team gain efficiency and effectiveness.

IMPROVE VISIBILITY

AccellosOne's web-centric design gives you the ability to allow internal and external users visibility into the status of warehouse operations. Providing visibility creates competitive differentiation for your business that drives ROI.

CONTACT US AT:

90 S. Cascade Suite 1200
Colorado Springs, CO 80903
Phone: (719) 433-7000
Fax: (719) 433-7039
www.accellos.com



Advanced Event Engine

The new Advanced Event Engine provides powerful tools designed to leverage the system to deliver real-time information on behalf of your employees. The system can tap new orders, receipts, bills, or customers that meet user defined criteria and generate emails, text messages, workflows, database updates or custom actions.

Extensible Performance Reporting

AccellosOne WMS incorporates the powerful AccellosOne Report application to enhance the core reporting capability, deliver new Performance Reports, and allow for better user definable reporting extensions.

Enhanced Supply Chain Intelligence

AccellosOne WMS delivers more powerful access to key performance indicators (KPIs) that can assist a business manager in more effectively making decisions within their business. New Pivot capabilities enable users' virtually limitless ways to slice and dice information. The Win 8.1 tablet app mobilizes information wherever it is needed to illuminate trends and highlight outliers so that effective decision making becomes commonplace.

One Modular Solution Suite to Fit Your ERP

Functionality is important. Couple that with a tight integration to your ERP and an enduring company that cares for its customers and its R and D budget, and you've got a good fit. AccellosOne Integrate, our configurable web services integration platform, stands between the warehouse and your ERP, order management, ecommerce or purchasing system(s). Leverage one of the many prebuilt integration toolkits for popular ERP systems from Microsoft, Sage, SAP, NetSuite, Infor and more. Here are some examples of modules within the Accellos solutions suite:

Dynamic Quality Inspection: Tailored quality inspections can be designed with custom questionnaires, focused pass/fail criteria and conditional activities to ensure the quality of both inbound and outbound processes. Mobile users can leverage the intuitive Win 8.1 tablet app to not only execute the inspections, but record pictures of the condition of the material, trailer or container.

Integrated Document Imaging with OCR Support: The latest release of our Document Imaging system increases the user's ability to navigate towards a paperless environment by offering optional OCR support. This allows the development of "form templates" which can be used to scan key information from a printed page and use that information to associate the document with relevant information stored in the WMS.

Powerful Multi-Carrier Shipping: Some see Shipping as a disconnected process outside the WMS proper. Accellos sees it as an integrated step in the pick/pack/ship handheld workflow allowing the user to save time and simplify their warehouse processes. The latest version of our multi-carrier shipping streamlines not only the "inline" shipping functionality, but also the exception shipping done from our shipping station.

Configurable Appointment Scheduling: We've enhanced the appointment scheduling capability available to the WMS 6.5 user by allowing them to manage a discrete number of appointments by time slot without predetermining an actual door assignment. This allows them to determine labor required and assign the available door when the inbound or outbound carrier arrives. From this information, we've driven solid KPIs that assist in both planning and negotiating arrangements with key carriers.

Extensible Activity Billing: The latest version of activity billing extends the capability for those users of the WMS who are either third party logistics companies (3PLs) or who share space in a single facility with others and bill them on a space and services rendered basis.

Integrated ASN Manager: While AccellosOne Warehouse has provided data for ASN production for many releases, the incorporation of the ASN Manager takes the capability to a new level. The people responsible for EDI within an organization now have full visibility, access and edit capability to ensure that the ASN payload that is sent out is accurate and compliant with the requirements of the trading partner. The system also provides the ability to print GS1 labels, Bills of Lading and Commercial Invoices.

AccellosOne Warehouse

Call Us Today For More Details

AccellosOne Warehouse can help you lower your costs, improve your customer service and drive operational efficiencies in your business. Get on the phone with one of our Business Solutions Advisors today to learn more.

CONTACT US AT:

90 S. Cascade Suite 1200
Colorado Springs, CO 80903
Phone: (719) 433-7000
Fax: (719) 433-7039
www.accellos.com



Cloud-ready Label Print Manager: More and more customers are opting to use the cloud for their computing environment – whether it's a private cloud of their own or leveraging the one of the AccellosOnDemand public cloud solutions. Our Print Manager provides a secure, high-performance means of printing things like bar code compliance labels on premise while the services run in the cloud. This allows you to print jobs via the internet without utilizing a VPN.

Ruggedized Handheld Design Tools

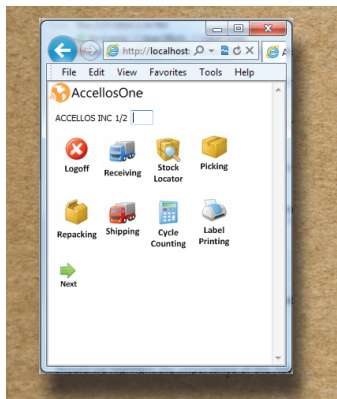
There are typically more handheld WMS users than those using the desktop apps. The WMS Design Toolkit allows those users to have the same degree of configurability that the desktop user has. Built on top of our Workflow engine, the Design Toolkit provides a graphical design surface to reconfigure both the workflow (business logic) of a handheld function as well as the user experience itself.

Cloud eLearning

As a society we've moved into the "YouTube" mode of learning. Our cloud content delivery network is hosted in Microsoft Azure and syndicated throughout the world for fast, efficient streamed delivery of "help" videos and multi-lesson classes. AccellosOne eLearning provides powerful information designed to make your users more knowledgeable and self-sufficient.

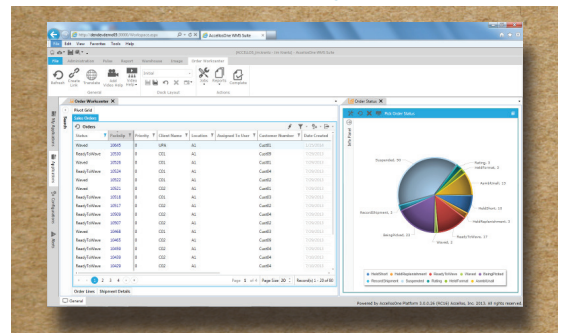
Flexible Deployment Options

AccellosOne WMS is available on premise or Cloud-delivered in a software-as-a-service (SaaS) model.



Our enhanced handheld user interface (above)

WMS and AccellosOne Pulse intelligence tool (below)



ABOUT ACCELLOS, A HIGHJUMP PRODUCT

Accellos, a HighJump product, is a global provider of software solutions specifically designed for the unique needs of logistics service providers and mid-sized businesses. Over 4,000 companies trust Accellos to be the technology backbone of their global supply chains. Accellos provides solutions for warehouse management systems (WMS), third party logistics (3PL), fleet management, transportation management systems (TMS), electronic data interchange (EDI), retail store operations, automated barcode data collection, parcel shipping, transportation optimization and supply chain business intelligence. Accellos solutions are built on the AccellosOne platform, a modern technology platform featuring a user-friendly interface and simplified technical administration. For more information, email info@accellos.com or visit www.accellos.com.